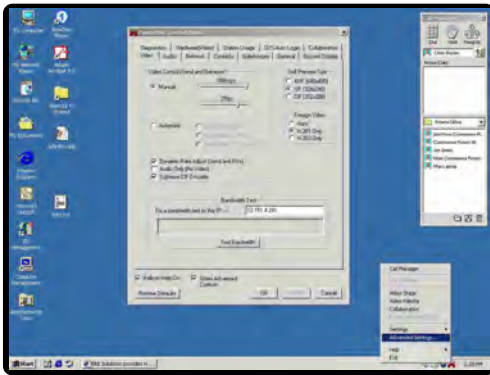




See The Possibilities.

# © IPContact

The Software Solution  
for Multipoint Video  
Communications and  
Collaboration



Significantly Reduce Your  
Multipoint Conferencing Costs

One Easy User Interface  
Across Your Entire Enterprise

Personal, Mobile and Dedicated  
Room Solutions

World's Best Data Collaboration

Complete Bandwidth  
Management and Control



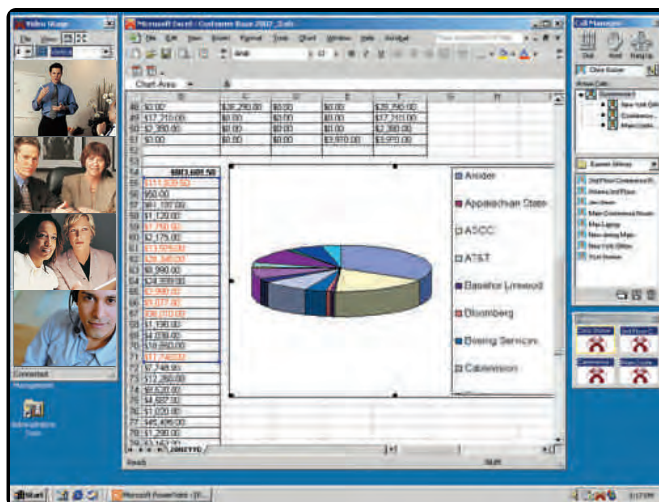
Say Hello to IPContact™, the first software-only videoconferencing application that meets or beats the performance of industry leading, hardware-based systems.

**Multipoint without an MCU...** IPContact sets a new standard in quality for IP-based videoconferencing systems. It provides FOUR TIMES the video resolution and half the latency of other multipoint systems. It is the ONLY product including endpoints and MCUs that can show all four members of the conference each in CIF resolution at 30 fps.

**Data Collaboration...** When it comes to collaboration, we work with you! IPContact's data collaboration is the easiest, fastest, and most powerful you can get. You never have to attach a second PC for collaboration and everybody in your conference can see and manipulate the document being viewed.

**H.323 Compatible...** IPContact is H.323 compliant and interoperates with other H.323 endpoints. Install IPContact on your laptop and be able to call existing H.323 boardroom systems.

**Bandwidth Management...** You'd like multimedia communications capability, but aren't exactly sure how your network would like it? Not to worry – IPContact gives you the most complete set of bandwidth controls you can get. You can choose fully automatic operation, or quickly and easily implement rules that work with your bandwidth assets. Either way, IPContact puts you in control.



System	Lite	IPContact	PRO (embedded)
H.323	◆	◆	◆
Multipoint Without MCU	◆	◆	◆
Continuous Presence Video	3	4	4
Continuous Presence Audio	3	8	8
CIF Resolution per Video in Multipoint	◆	◆	◆
VNC Collaboration	◆	◆	◆
Local Camera Control		◆	◆
Local Device Control*		◆	◆
Remote Camera Control	◆	◆	◆
Remote Device Control*	◆	◆	◆
Remote System Management	◆	◆	◆

\* Device Control currently supports an 8 port video switch and VCR

Video Standards and Attributes	Lite	IPContact	PRO
H.261	◆	◆	◆
H.263	◆	◆	◆
CIF (352 X 288 Pixels)	◆	◆	◆
QCIF (176 X 144 Pixels)	◆	◆	◆
Maximum Frame Rate	30	30	30
Maximum Transmission Rate	512 Kbps	768 Kbps	1024 Kbps
Picture-in-Picture (Self View)	◆	◆	◆
Video Muting	◆	◆	◆
Pre-Set Screen Layouts	22	22	22
Drop and Drag Video	◆	◆	◆
Video Window Sizing	◆	◆	◆
Dual Monitor Support	◆	◆	◆

Audio Standards and Attributes	Lite	IPContact	PRO
G.711	◆	◆	◆
G.711+	◆	◆	◆
Audio-only Calls	◆	◆	◆
Maximum Audio-only	3	8	8
Audio Muting	◆	◆	◆

Directories and Dialing	Lite	IPContact	PRO
Maximum Directory Entries	Unrestricted	Unrestricted	Unrestricted
Central Directory	◆	◆	◆
Single Touch Dial	◆	◆	◆
Manual IP Dialing Facility	◆	◆	◆

Network	Lite	IPContact	PRO
Network Address Translation (NAT)	◆	◆	◆
Automatic NAT Address Discovery	◆	◆	◆
Automatic Gatekeeper Discovery	◆	◆	◆
Dynamic Bandwidth Control	◆	◆	◆
Upward Bound Bandwidth Caps	◆	◆	◆
Frame and Bit Rate Control	◆	◆	◆
IP Precedence	◆	◆	◆
Multicast Enabled	◆	◆	◆
Configurable Firewall Port Ranges	◆	◆	◆

#### Machine, Operating System and Network - All Versions

Operating System	Windows XP, Windows 2000
Processor Type and Speed	P4 or Equivalent – 1.4GHz Min. (2.0*)
RAM	256 MB
Video Memory	16 MB Dedicated (32 MB*)
Free Drive Space	30 MB
Network	minimum of 384 Kbps

\*recommended for optimum performance of IPContact

\*\* Camera and Headset not included

## Meet the Family

### IPContact Lite

*Your Personal Solution*

All you need is a PC, a broadband IP connection, a USB camera, and you're ready to do multipoint conferences with data collaboration. You get 3-way continuous presence multipoint audio and video at speeds up to 512 Kbps per video stream.

### IPContact (standard)

*The High Performance Departmental Solution*

IPContact gives you all the features of IPContact, plus we've added 8-way conferencing with 4-way continuous presence video at speeds up to 768 Kbps per video stream.

### IPContact PRO

*The Solution for Controlling the Boardroom*

IPContact PRO is an embedded software product for the PowerPlay CS901-PRO, rack-mounted codec.

IPContact PRO gives you all the features of the standard version coupled with stunning multipoint video quality at 1024 Kbps per video stream. In addition, PRO gives you the ability to connect and switch between up to eight additional video input devices. You also have four RS232 ports to control multiple cameras and VCRs.

#### For Information Contact

Inventive Technology  
Phone: 800-474-5128  
Fax: 815-301-8269

Email: [IPContact@inventivetec.com](mailto:IPContact@inventivetec.com)  
<http://inventivetec.com>